

Technical data sheet for

## **SINGLE PAN ELECTRIC PASTA COOKER 450mm**

E47, E47-7

- High performance single pan pasta cooker  
E47 10.5kW 3 phase  
E47-7 7.0kW 1 phase
- Heavy-duty 3 coil Incoloy 825 element
- Easy clean 316 grade stainless steel open pan with 10 year limited warranty
- 40L water capacity
- Integrated water fill and starch skimming water faucet
- Four stainless steel pasta baskets supplied
- Hinged basket drain stand
- Safety cut-out thermostat for empty pan/water boil out
- Stainless steel exterior
- Easy clean
- Easy service
- Fully modular



E47

### **Overall Construction**

- Pan 1.5mm 316 stainless steel with 10 year limited warranty
- Bull nose welded 1.5mm stainless steel
- Splashback 1.2mm stainless steel
- Side panels 1.2mm stainless steel
- Double skin door with 0.9mm stainless exterior
- 25mm (1") skimming overflow and pan drains drain valve
- 63mm dia. heavy-duty 1.2mm stainless steel legs with adjustable feet
- 4 stainless steel baskets with moulded handles
- Stainless steel wire basket support grid in pan

### **Controls**

- Large easy to use knob - heat resistant reinforced
- 3 power settings (boil-simmer-standby)
- Mechanical thermostat
- Thermostat range 30°C - 110°C
- Fail safe over-temperature safety cut-out
- Element tilt switch for heating cut-out
- Indicator lights for power & heating
- Fine adjustment water faucet for pan filling and water refreshing/ starch skimming

### **Cleaning and Servicing**

- Open stainless steel pan for easy clean
- Hinged basket drain stand
- Removable basket support grid
- 25mm (1") drain valve for effective draining
- Easy clean stainless steel exterior
- Access to all parts from front of unit

# Technical data sheet for SINGLE PAN ELECTRIC PASTA COOKER 450mm

## Specifications

### Pan Size

Water capacity 40L  
Width 365mm  
Length 405mm  
Basket immersion depth 165mm

### Baskets

4 stainless steel perforated baskets with moulded plastic handles 165mm square x 180mm deep  
Stainless steel wire basket support grid

### Elements

1 x 10.5kW Incoloy 825 heating element (E47)  
1 x 7.0kW Incoloy 825 heating element (E47-7)

### Electrical Requirements

E47  
10.5kW, 400-415V, 50/60Hz, 3P+N+E  
L1 14.6A  
L2 14.6A  
L3 14.6A

### E47-7

7.0kW, 220-240V, 50/60Hz, 1P+N+E  
L1 29.2A

### Electrical Connection

56mm from RH side, 541mm from rear  
and 489mm from floor

### Water Connection

Cold water connection 50mm from left hand side,  
556mm from rear and 150mm from floor  
R<sup>1</sup>/<sub>2</sub> (BSP) male  
550kPa 80psi maximum water pressure

### Drain Connection

Drain must be connected to system suitable for  
boiling water discharge  
1" BSP Male connection 118mm from left hand side,  
470mm from rear, and 170mm from floor

### Dimensions

Width 450mm  
Depth 812mm  
Height 915mm  
Incl. splashback 1085mm

### Nett weight

78kg

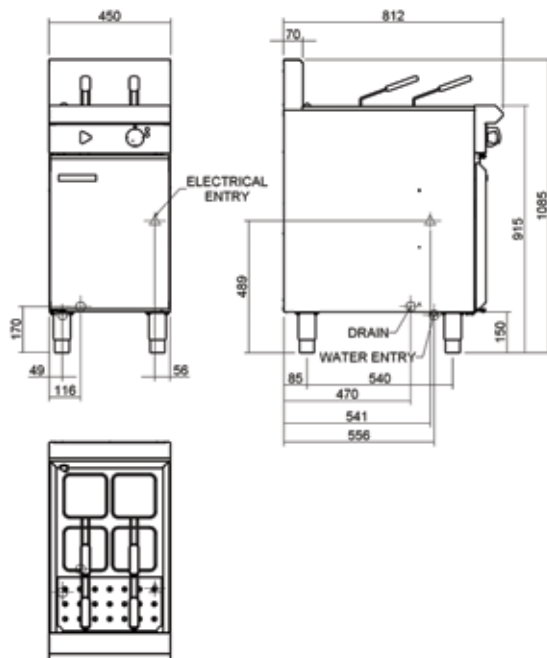
### Packing data

0.54m<sup>3</sup>, 120kg  
Width 870mm  
Depth 495mm  
Height 1255mm

### Options

Rectangular baskets 320mm x 165mm  
Side splash guards  
Joining caps

E47



**MOFFAT®**

Australia  
www.moffat.com.au  
New Zealand  
www.moffat.co.nz

www.bluesealevolution.com

Australia  
Moffat Pty Limited

Victoria/Tasmania  
740 Springvale Road  
Mulgrave, Victoria 3170  
Telephone 03-9518 3888  
Facsimile 03-9518 3833  
vsales@moffat.com.au

New South Wales  
Telephone 02-8833 4111  
nswsales@moffat.com.au

South Australia  
Telephone 03-9518 3888  
vsales@moffat.com.au

Queensland  
Telephone 07-3630 8600  
qldsales@moffat.com.au

Western Australia  
Telephone 08-9202 6820  
bgarcia@moffat.com.au

New Zealand  
Moffat Limited

Christchurch  
16 Osborne Street  
Christchurch 8011  
Telephone 03-389 1007  
Facsimile 03-389 1276  
sales@moffat.co.nz

Auckland  
Telephone 09-574 3150  
sales@moffat.co.nz



ISO9001  
Quality  
Management  
Standard

Designed and manufactured by

**MOFFAT®**

ISO9001

All Blue Seal products are designed and manufactured by Moffat using the internationally recognised ISO9001 quality management system, covering design, manufacture and final inspection, ensuring consistent high quality at all times.

In line with policy to continually develop and improve its products, Moffat Limited reserves the right to change specifications and design without notice.

Printed in China  
© Copyright Moffat Ltd  
Moffat / 7.09 / 1140

